



**FITTING INSTRUCTIONS FOR RAD0220BK**  
**RADIATOR GUARD**  
**YAMAHA YZF-R6 '17-**

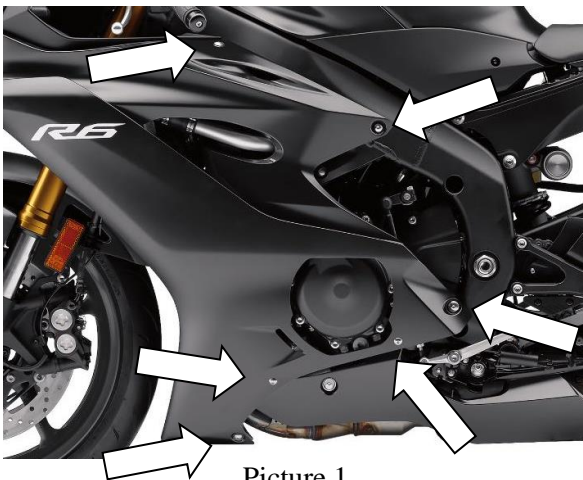


**THIS KIT CONTAINS THE ITEMS PICTURED AND LABELLED BELOW.**  
**DO NOT PROCEED UNTIL YOU ARE SURE ALL PARTS ARE PRESENT.**

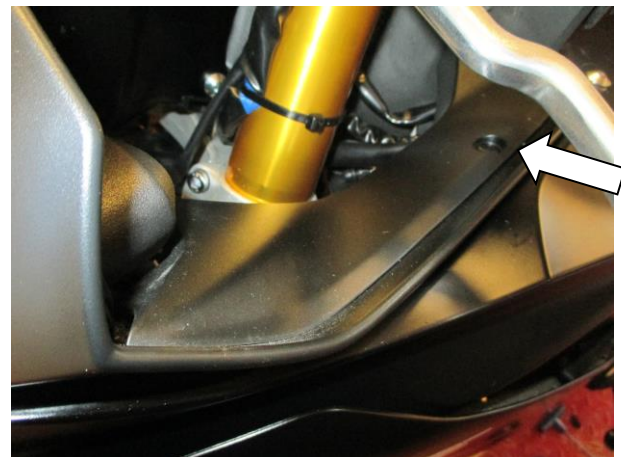
**Please note that the way the kit is packed does not necessarily represent the way of mounting to the bike.**

THE PARTS SHOWN MAY BE REPRESENTATIVE ONLY (FOR CLARITY OF INSTRUCTIONS ONLY).

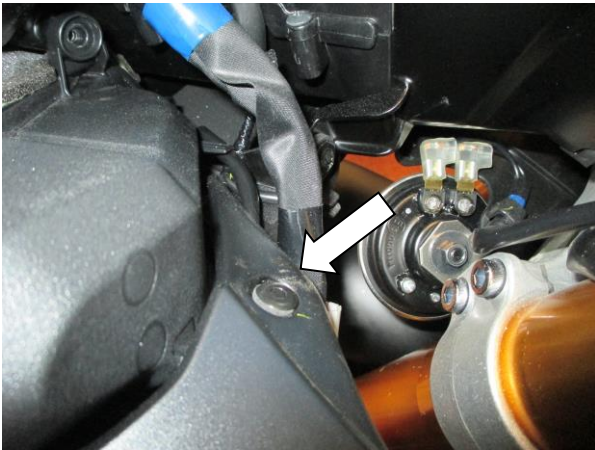
**In This Kit There Should Be**  
1x Radiator Guard (RAD0220).  
4x Cable Ties.  
3 x 100mm Self Adhesive foam



Picture 1



Picture 2



Picture 3



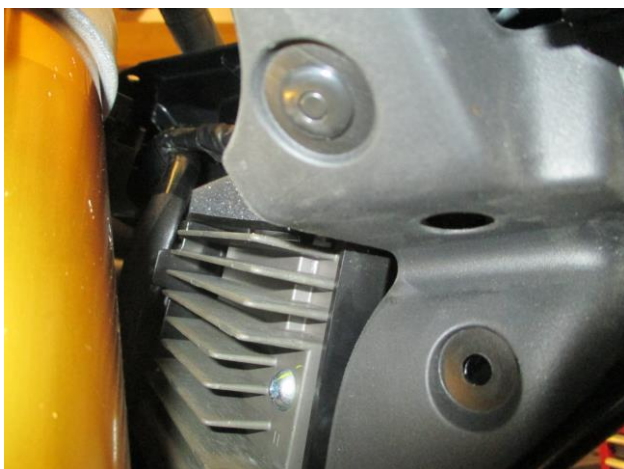
Picture 4



Picture 5



Picture 6



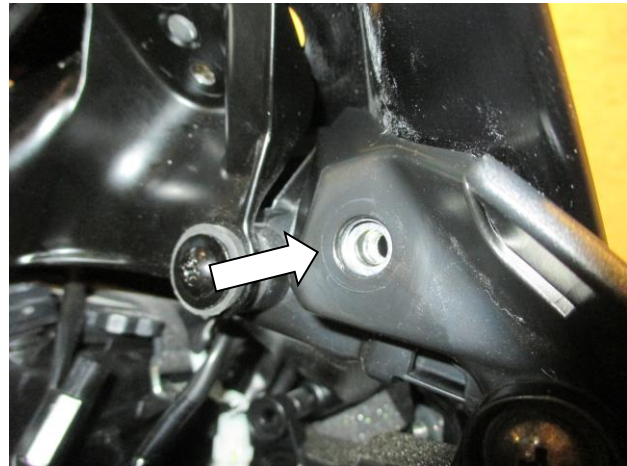
Picture 7



Picture 8



Picture 9



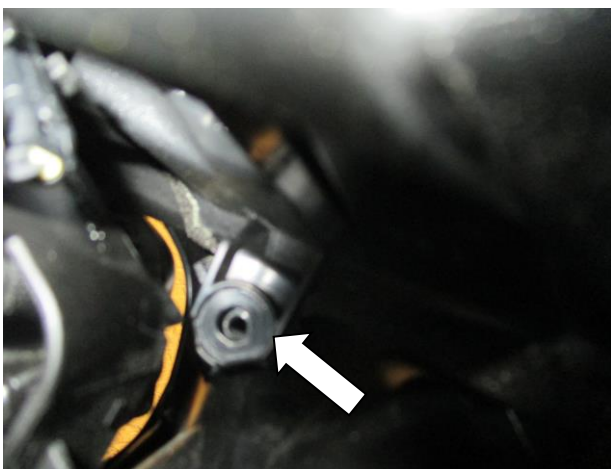
Picture 10



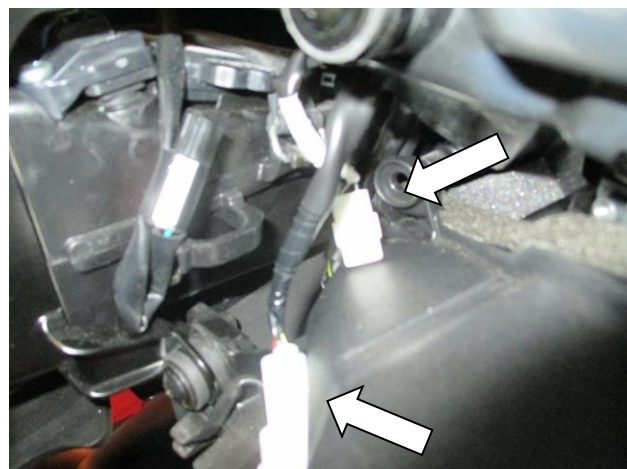
Picture 11



Picture 12



Picture 13



Picture 14



Picture 15



Picture 16



Picture 17



Picture 18



Picture 19



Picture 20



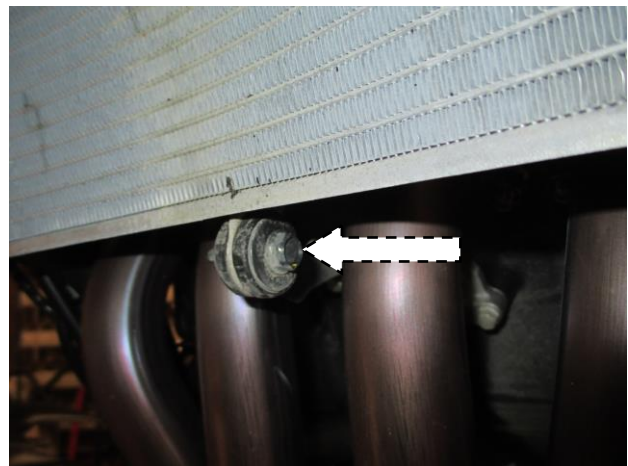
Picture 21



Picture 22



Picture 23



Picture 24



Picture 25



## FITTING INSTRUCTIONS

- To remove the left side fairing on the bike, remove the six bolts that are arrowed in picture 1.
- Remove the bolt that secures the rear of the infill panel, as arrowed in picture 2.
- Remove the push rivet on the front corner of the infill panel behind the headlights, as arrowed in picture 3.
- The infill panel can now be removed, as shown in picture 4. *Repeat the above three stages to remove the fairing bolts and infill panel on the right side of the bike.*
- Remove the four push rivets that secure the radiator cowl in place on the left side of the bike, as shown in pictures 5, 6 & 7, before removing the cowl from the bike. *Repeat this procedure to remove the right side radiator cowl.*
- Remove the mirrors from the bike by disconnecting the wiring connector for the indicators and then removing the two nuts that secure the indicator in place, as shown in picture 8.
- Remove the mirror whilst feeding the connector and wiring out from the hole, as shown in picture 9. *Repeat for the other side.*
- On the right side of the bike, remove the bolt that is arrowed in picture 10.
- Remove the three bolts that secure the right side headlight unit in place, as arrowed in pictures 11, 12 & 13.
- Disconnect the two large white wiring connectors, as shown in pictures 14 & 15.
- The right side headlight unit can now be removed from the bike, as shown in picture 16.
- *Repeat the above four stages to remove the left side headlight unit, as shown in picture 17 (there is only one large white connector to disconnect).*
- The front fairing can now be removed (this is a little tricky and may require a second person). The fairing is held on by four yellow plastic clip mounts, as shown in pictures 18, 19 & 20. These need to be squeezed together whilst the fairing is gently pulled in order to release from their mounts. The best way to do this is by using long nose pliers or a screwdriver to squeeze the clip from inside the fairing, whilst an assistant gently pulls the fairing from the front in the immediate area around each clip.
- Once removed, access can be gained to the final two fairing bolts. Remove these, as shown on the right side in picture 21.
- The fairings can now be removed, by unclipping towards the front, releasing the yellow clip that is shown in picture 22 and removing from the bike, as shown in picture 23.
- Remove the lower mount radiator bolt as arrowed in Picture 24.
- Offer the new radiator guard in position with the top part being tucked in behind the hoses and its lower mount positioned behind the radiator rubber lower mount as shown in Picture 25. Insert the OEM bolt through to secure the radiator guard's lower mount in position, do not fully tighten the bolt at this stage.
- Using the cable ties provided, secure each corner of the radiator guard onto the radiator matrix.
- Tighten the bottom mounting bolt to a manufacturer's specified torque setting.
- Ensure that the radiator guard is correctly fitted.
- Re-fit the headlights, nose fairing, mirrors and infill panels in a reverse procedure of the first 16 steps.
- Ensure that the fairings are correctly fitted before riding.



ISSUE 1 31/08/2017 (HH)

**Digital copies of these instructions are available to download from [www.rg-racing.com](http://www.rg-racing.com)**

#### **CONSUMER NOTICE**

The catalogue description and any exhibition of samples are only broad indications of the Products and R&G may make design changes which do not diminish their performance or visual appeal and supplying them in such state shall conform to the order. The Buyer acknowledges no representation or warranty (other than as to title) has been given or will apply to the Products other than those in R&G's order or confirmation and the Buyer confirms it has chosen the Products as being of merchantable quality and suitable for its particular purposes. Where R&G fits the Products or undertakes other services it shall exercise reasonable skill and care and rectify any fault free of charge unless the workmanship has been disturbed. The Buyer is responsible for ensuring that the warranty on the motorcycle is not affected by the fitting of the Products. On return of any defective Products R&G shall at its option either supply a replacement or refund the purchase money but shall not be liable if the Products have been modified or used or maintained otherwise than in accordance with R&G's or manufacturer's instructions and good engineering practice or if the defect arises from accident or neglect. Other than identified above and subject to R&G not limiting its liability for causing death and personal injury, it shall not be liable for indirect or consequential loss and otherwise its liability shall be limited to the amounts paid by the Buyer for the Products or the fitting or service concerned. These terms do not affect the Buyer's statutory rights.

#### **R&G RACING RETURNS POLICY (NON-FAULTY GOODS)**

Returns must be pre-authorized (if not pre-authorized the return will be rejected). Goods may only be returned direct to us if they were purchased direct from us (customer must prove if necessary). Otherwise to be returned to original vendor. Goods must be in re-sellable condition, in the opinion of R&G Racing. All returns are subject to a 25% restocking and handling fee (25% of the gross value exc. P&P – at the prevailing price at time of purchase). The customer must pay any and all carriage charges. No returns of discontinued products, unless within 14 days of purchase. This policy does not affect your statutory rights and does not refer to faulty goods.



**NOTICE DE MONTAGE POUR RAD0220BK**  
**GRILLE DE PROTECTION RADIATEUR**  
**YAMAHA YZF-R6 '17-**



**Le kit contient les articles exposés ci-dessous, vérifier que toutes les pièces soient présentes avant de procéder au montage.**

**La façon dont le kit est emballé ne correspond pas forcément à la façon de monter les pièces sur la moto.**

**LES PARTIES PRESENTEES PEUVENT ETRE UNIQUEMENT REPRESENTATIVES (POUR LA CLARTE DES INSTRUCTIONS UNIQUEMENT).**

**Le kit doit contenir**

- 1x Grille de protection radiateur (RAD0220).
- 4x Colliers de serrage.
- 3x Mousse autocollante

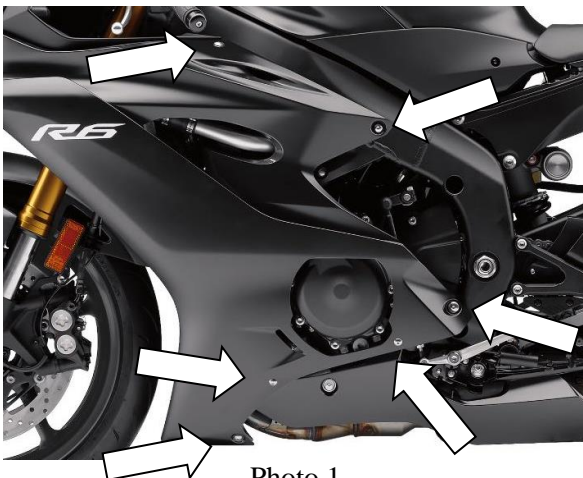


Photo 1

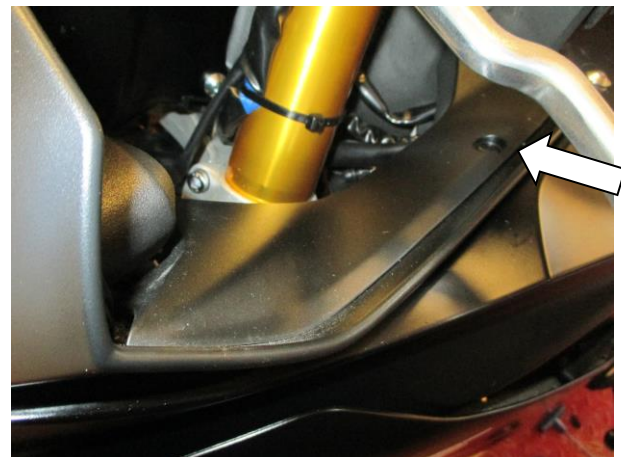


Photo 2



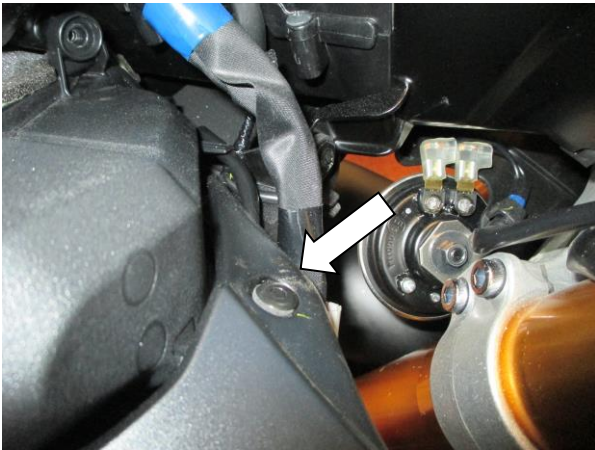


Photo 3



Photo 4



Photo 5



Photo 6

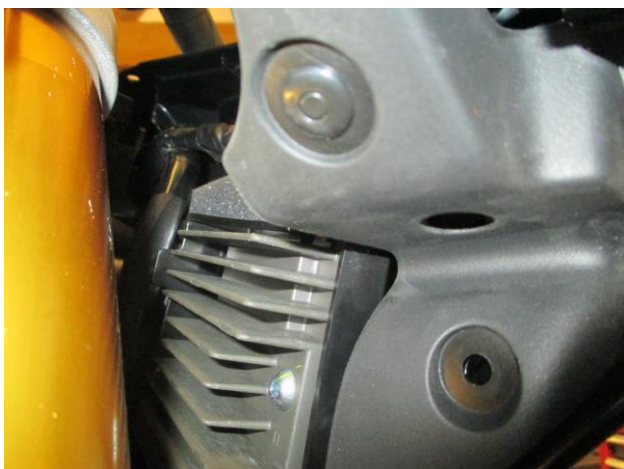


Photo 7

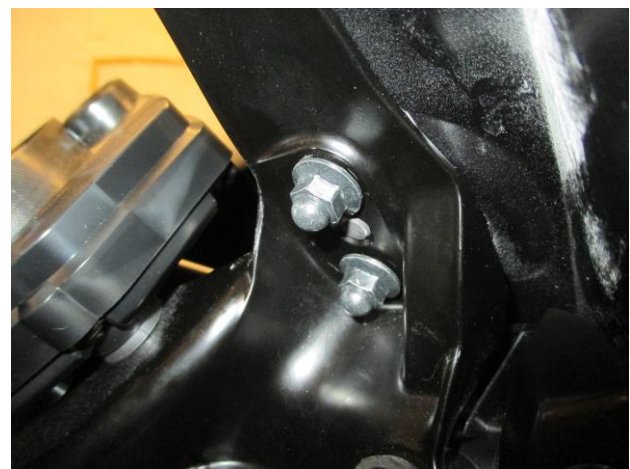


Photo 8



Photo 9

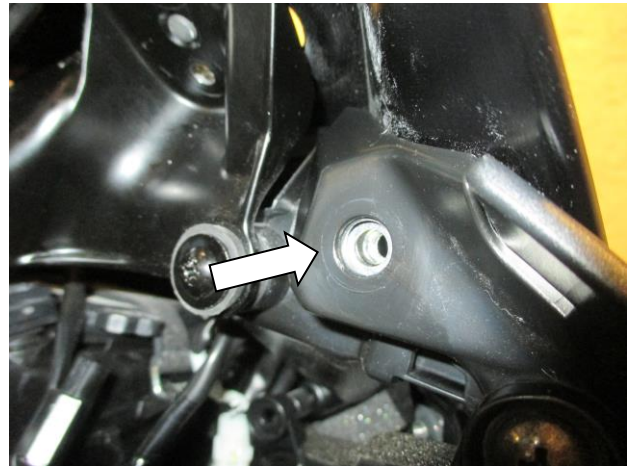


Photo 10



Photo 11



Photo 12

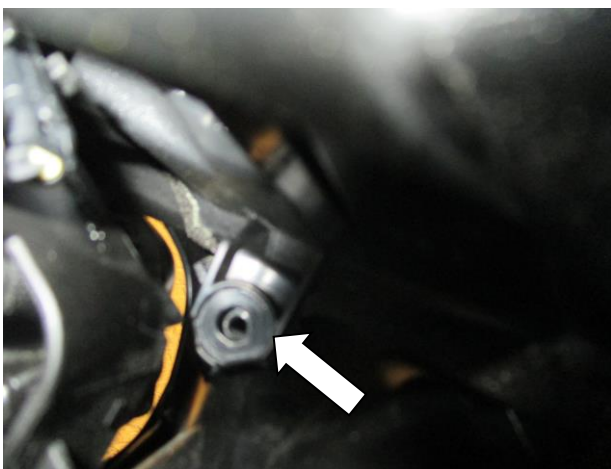


Photo 13

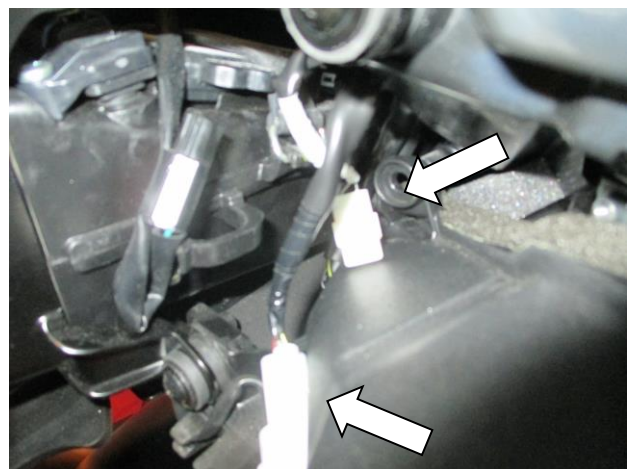


Photo 14



Photo 15



Photo 16



Photo 17

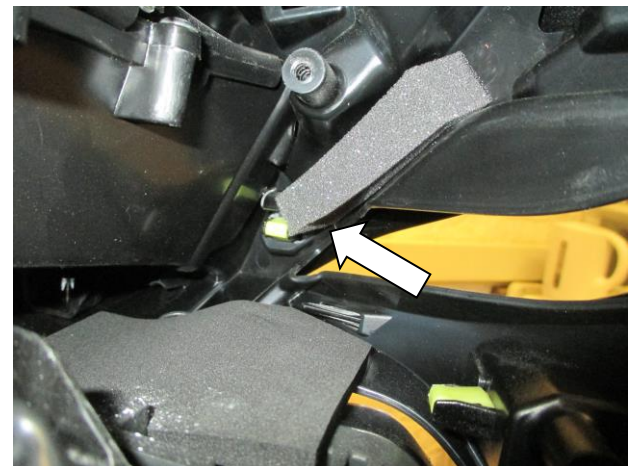


Photo 18



Photo 19



Photo 20



Photo 21



Photo 22



Photo 23

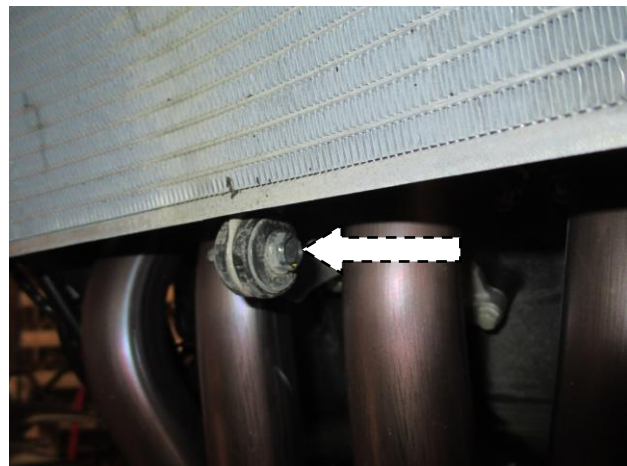


Photo 24



Photo 25



## NOTICE DE MONTAGE:

- Pour Enlever le carénage du côté gauche de la moto, enlever les 6 boulons indiqués sur la photo 1.
- Enlever le boulon qui fixe l'arrière du panneau interne, voir photo 2.
- Enlever le rivet situé dans le coin avant du panneau interne derrière les feux, voir photo 3.
- Le panneau interne peut maintenant être enlevé, voir photo 4. *Répéter les 3 étapes supérieures pour enlever les boulons de carénage du côté droit de la moto.*
- Enlever les 4 rivets qui fixent le capot de radiateur en place du côté gauche de la moto, voir photos 5, 6 & 7, avant d'enlever le capot de la moto. *Répéter la procédure pour enlever le capot de radiateur du côté droit.*
- Enlever les rétroviseurs de la moto en déconnectant le connecteur de fil de clignotants puis en enlevant les 2 écrous qui fixent le clignotant en place, voir photo 8.
- Enlever le rétroviseur en passant le connecteur et le fil à l'extérieur du trou, voir photo 9. *Répéter l'opération de l'autre côté.*
- Du côté droit de la moto, enlever le boulon indiqué sur la photo 10.
- Enlever les 3 boulons qui fixent l'unité de feu du côté droit en place, voir photos 11, 12 & 13.
- Déconnecter les 2 connecteurs blancs et larges, voir photos 14 & 15.
- L'unité de feu du côté droit peut maintenant être retiré de la moto, voir photo 16.
- *Répéter les 4 étapes supérieures pour enlever l'unité de feu du côté gauche, voir photo 17 (Il n'y a qu'un connecteur blanc et large à déconnecter).*
- Le carénage avant peut à présent être retiré (c'est un peu compliqué, cette opération est plus facile s'il y a une 2e personne). Le carénage est maintenu par 4 supports, voir photos 18, 19 & 20. Ils doivent être pressés ensemble tout en retirant le carénage de ces supports. La meilleure façon de s'y prendre est d'utiliser des longues pinces à bec ou un tournevis cruciforme pour presser le clip à l'intérieur du carénage, pendant que votre assistant tire le carénage depuis l'avant à l'endroit même qui entoure chaque clip.
- Une fois enlevé, l'accès aux 2 boulons de carénage est maintenant possible. Enlevez-les, voir du côté droit de la photo 21.
- Les carénages peuvent maintenant être enlevés, en déclipant vers l'avant, ce qui libère le clip jaune, voir photo 22 puis enlevez-le de la moto, photo 23.
- Enlever le boulon de support inférieur de radiateur, voir Photo 24.
- Monter la grille de protection radiateur en position avec la partie du haut repliée derrière les nez et leur support inférieur positionné derrière le support inférieur de radiateur en caoutchouc, voir Photo 25. Insérer le boulon d'origine à travers pour fixer le support inférieur de grille de protection radiateur en place, ne pas serrer au maximum pour le moment.
- Utiliser les colliers de serrage fournis pour fixer chaque coin de la grille de protection radiateur sur la matrice de radiateur.
- Serrer le boulon de fixation du bas à la valeur de serrage recommandée.
- Veiller à ce que la grille de protection radiateur soit correctement montée.
- Remonter les feux, le nez de carénage, les rétroviseurs et panneaux internes selon la procédure inverse des 16 premières étapes.
- Veiller à ce que les carénages soient correctement remontés avant de prendre la route.

ISSUE 1 31/08/2017 (HH)

**Notice disponible au téléchargement sur [www.rg-racing.com](http://www.rg-racing.com)**

R&G Racing

Unit 1, Shelley's Lane, East Worldham, Alton, Hampshire, GU34 3AQ

Tel: +44 (0)1420 89007 Fax: +44 (0)1420 87301 [www.rg-racing.com](http://www.rg-racing.com) Email: [info@rg-racing.com](mailto:info@rg-racing.com)



#### **CONSUMER NOTICE**

The catalogue description and any exhibition of samples are only broad indications of the Products and R&G may make design changes which do not diminish their performance or visual appeal and supplying them in such state shall conform to the order. The Buyer acknowledges no representation or warranty (other than as to title) has been given or will apply to the Products other than those in R&G's order or confirmation and the Buyer confirms it has chosen the Products as being of merchantable quality and suitable for its particular purposes. Where R&G fits the Products or undertakes other services it shall exercise reasonable skill and care and rectify any fault free of charge unless the workmanship has been disturbed. The Buyer is responsible for ensuring that the warranty on the motorcycle is not affected by the fitting of the Products. On return of any defective Products R&G shall at its option either supply a replacement or refund the purchase money but shall not be liable if the Products have been modified or used or maintained otherwise than in accordance with R&G's or manufacturer's instructions and good engineering practice or if the defect arises from accident or neglect. Other than identified above and subject to R&G not limiting its liability for causing death and personal injury, it shall not be liable for indirect or consequential loss and otherwise its liability shall be limited to the amounts paid by the Buyer for the Products or the fitting or service concerned. These terms do not affect the Buyer's statutory rights.

#### **R&G RACING RETURNS POLICY (NON-FAULTY GOODS)**

Returns must be pre-authorized (if not pre-authorized the return will be rejected). Goods may only be returned direct to us if they were purchased direct from us (customer must prove if necessary). Otherwise to be returned to original vendor. Goods must be in re-sellable condition, in the opinion of R&G Racing. All returns are subject to a 25% restocking and handling fee (25% of the gross value exc. P&P – at the prevailing price at time of purchase). The customer must pay any and all carriage charges. No returns of discontinued products, unless within 14 days of purchase. This policy does not affect your statutory rights and does not refer to faulty goods.



**NOTICE DE MONTAGE POUR RAD0220**  
**GRILLE DE PROTECTION RADIATEUR**  
**YAMAHA YZF-R6 '17-**



**Le kit contient les articles exposés ci-dessous, vérifier que toutes les pièces soient présentes avant de procéder au montage.**

**La façon dont le kit est emballé ne correspond pas forcément à la façon de monter les pièces sur la moto.**

**LES PARTIES PRESENTEES PEUVENT ETRE UNIQUEMENT REPRESENTATIVES (POUR LA CLARTE DES INSTRUCTIONS UNIQUEMENT).**

**Le kit doit contenir**

1x Grille de protection tuyaux (DG0026).

2x Colliers de serrage.

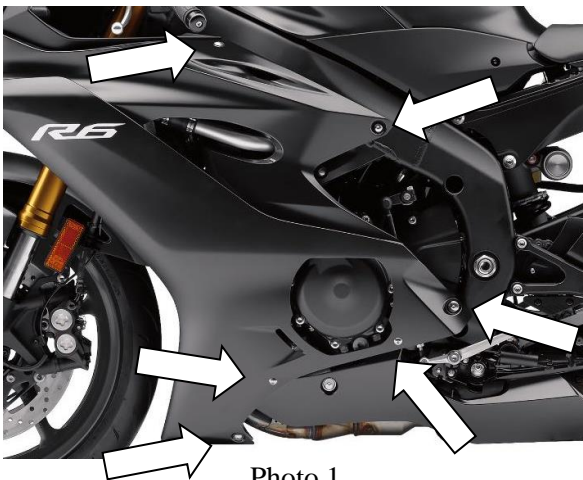


Photo 1

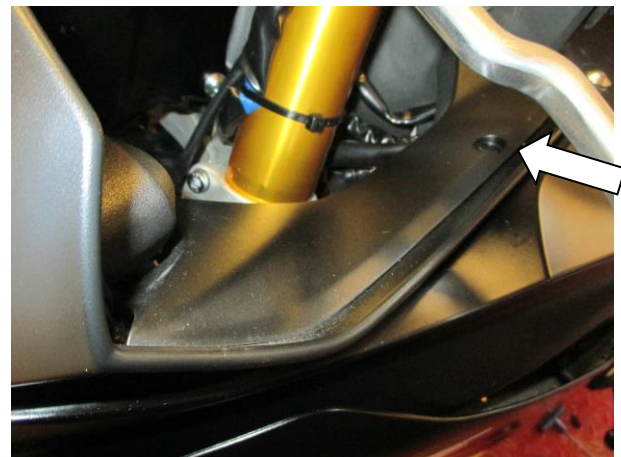


Photo 2

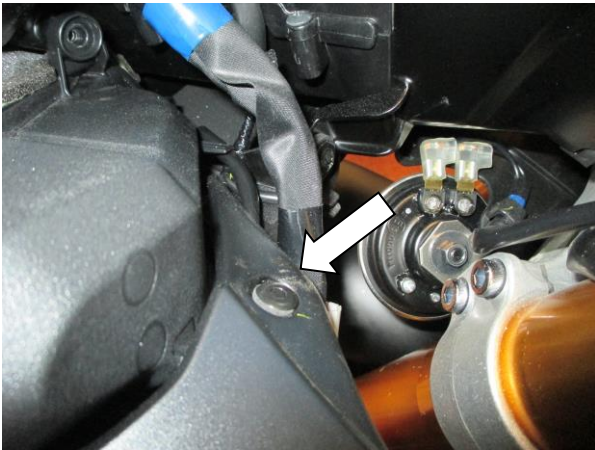


Photo 3



Photo 4



Photo 5



Photo 6

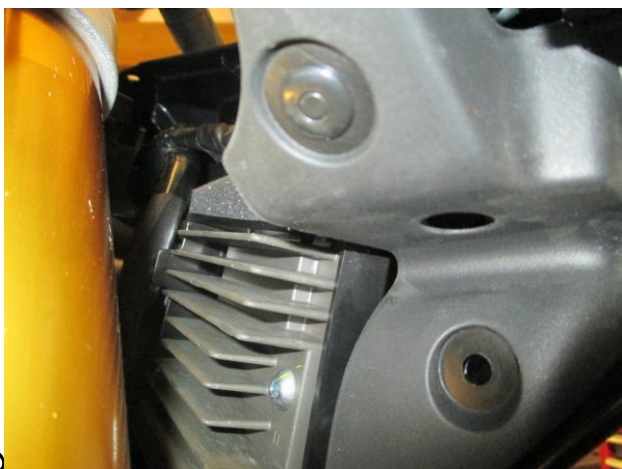


Photo 7

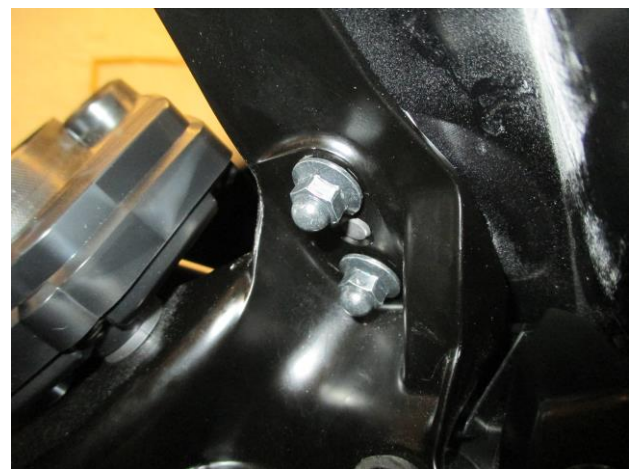


Photo 8





Photo 9

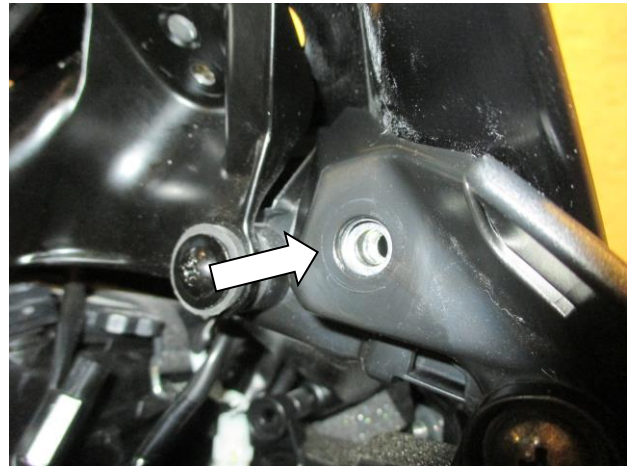


Photo 10



Photo 11



Photo 12

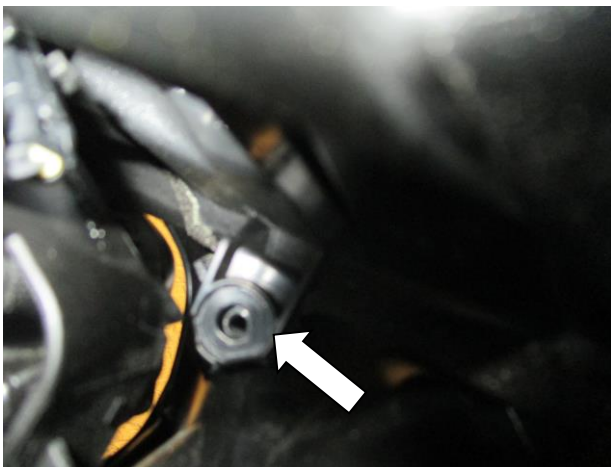


Photo 13

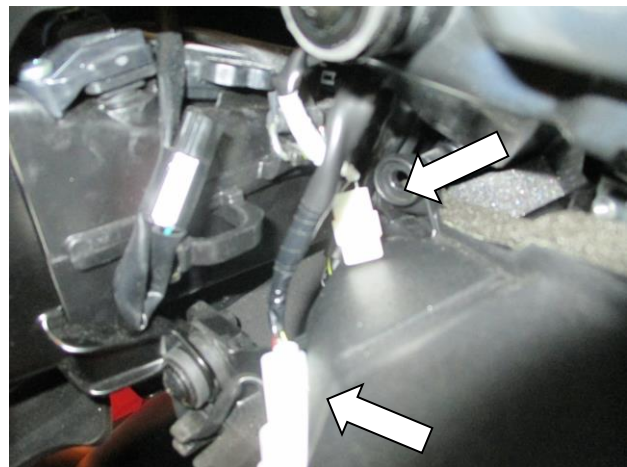


Photo 14



Photo 15



Photo 16



Photo 17



Photo 18



Photo 19



Photo 20



Photo 21



Photo 22



Photo 23

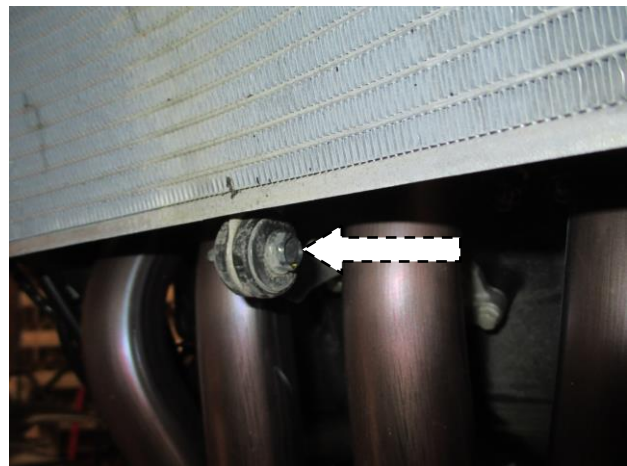


Photo 24



Photo 25



## **NOTICE DE MONTAGE**

- Pour Enlever le carénage du côté gauche de la moto, enlever les 6 boulons indiqués sur la photo 1.
- Enlever le boulon qui fixe l'arrière du panneau interne, voir photo 2.
- Enlever le rivet situé dans le coin avant du panneau interne derrière les feux, voir photo 3.
- Le panneau interne peut maintenant être enlevé, voir photo 4. *Répéter les 3 étapes supérieures pour enlever les boulons de carénage du côté droit de la moto.*
- Enlever les 4 rivets qui fixent le capot de radiateur en place du côté gauche de la moto, voir photos 5, 6 & 7, avant d'enlever le capot de la moto. *Répéter la procédure pour enlever le capot de radiateur du côté droit.*
- Enlever les rétroviseurs de la moto en déconnectant le connecteur de fil de clignotants puis en enlevant les 2 écrous qui fixent le clignotant en place, voir photo 8.
- Enlever le rétroviseur en passant le connecteur et le fil à l'extérieur du trou, voir photo 9. *Répéter l'opération de l'autre côté.*
- Du côté droit de la moto, enlever le boulon indiqué sur la photo 10.
- Enlever les 3 boulons qui fixent l'unité de feu du côté droit en place, voir photos 11, 12 & 13.
- Déconnecter les 2 connecteurs blancs et larges, voir photos 14 & 15.
- L'unité de feu du côté droit peut maintenant être retiré de la moto, voir photo 16.
- *Répéter les 4 étapes supérieures pour enlever l'unité de feu du côté gauche, voir photo 17 (Il n'y a qu'un connecteur blanc et large à déconnecter).*
- Le carénage avant peut à présent être retiré (c'est un peu compliqué, cette opération est plus facile s'il y a une 2e personne). Le carénage est maintenu par 4 supports, voir photos 18, 19 & 20. Ils doivent être pressés ensemble tout en retirant le carénage de ces supports. La meilleure façon de s'y prendre est d'utiliser des longues pinces à bec ou un tournevis cruciforme pour presser le clip à l'intérieur du carénage, pendant que votre assistant tire le carénage depuis l'avant à l'endroit même qui entoure chaque clip.
- Une fois enlevé, l'accès aux 2 boulons de carénage est maintenant possible. Enlevez-les, voir du côté droit de la photo 21.
- Les carénages peuvent maintenant être enlevés, en déclipsant vers l'avant, ce qui libère le clip jaune, voir photo 22 puis enlevez-le de la moto, photo 23.
- Enlever le boulon de support inférieur de radiateur, voir Photo 24.
- 
- Remonter les feux, le nez de carénage, les rétroviseurs et panneaux internes selon la procédure inverse des 16 premières étapes.
- Veiller à ce que les carénages soient correctement remontés avant de prendre la route.

ISSUE 1 31/08/2017 (HH)

**Notice disponible au téléchargement sur [www.rg-racing.com](http://www.rg-racing.com)**

### **CONSUMER NOTICE**

The catalogue description and any exhibition of samples are only broad indications of the Products and R&G may make design changes which do not diminish their performance or visual appeal and supplying them in such state shall conform to the order. The Buyer acknowledges no representation or warranty (other than as to title) has been given or will apply to the Products other than those in R&G's order or confirmation and the Buyer confirms it has chosen the Products as being of merchantable quality

R&G Racing

Unit 1, Shelley's Lane, East Worldham, Alton, Hampshire, GU34 3AQ

Tel: +44 (0)1420 89007 Fax: +44 (0)1420 87301 [www.rg-racing.com](http://www.rg-racing.com) Email: [info@rg-racing.com](mailto:info@rg-racing.com)



and suitable for its particular purposes. Where R&G fits the Products or undertakes other services it shall exercise reasonable skill and care and rectify any fault free of charge unless the workmanship has been disturbed. The Buyer is responsible for ensuring that the warranty on the motorcycle is not affected by the fitting of the Products. On return of any defective Products R&G shall at its option either supply a replacement or refund the purchase money but shall not be liable if the Products have been modified or used or maintained otherwise than in accordance with R&G's or manufacturer's instructions and good engineering practice or if the defect arises from accident or neglect. Other than identified above and subject to R&G not limiting its liability for causing death and personal injury, it shall not be liable for indirect or consequential loss and otherwise its liability shall be limited to the amounts paid by the Buyer for the Products or the fitting or service concerned. These terms do not affect the Buyer's statutory rights.

**R&G RACING RETURNS POLICY (NON-FAULTY GOODS)**

Returns must be pre-authorized (if not pre-authorized the return will be rejected). Goods may only be returned direct to us if they were purchased direct from us (customer must prove if necessary). Otherwise to be returned to original vendor. Goods must be in re-sellable condition, in the opinion of R&G Racing. All returns are subject to a 25% restocking and handling fee (25% of the gross value exc. P&P – at the prevailing price at time of purchase). The customer must pay any and all carriage charges. No returns of discontinued products, unless within 14 days of purchase. This policy does not affect your statutory rights and does not refer to faulty goods.